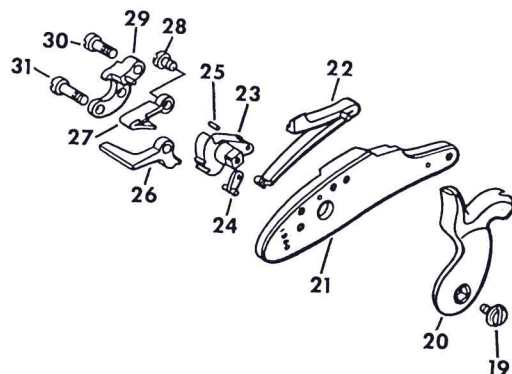


## Percussion Lock Assembly



## Components

Dwg. Pc. Mk.	Part Number	Description	Dwg. Pc. Mk.	Part Number	Description
19	6050138	Hammer Screw	26	6050145	Sear
20	6050139	Hammer	27	6050146	Sear Spring
21	6050140	Lock Plate	28	6050147	Sear Spring Screw
22	6050141	Main Spring	29	6050148	Tumbler Support Plate
23	6050142	Tumbler	30	6050149	Tumbler Plate Screw
24	6050143	Bridel	31	6050150	Rear Screw
25	6050144	Bridel Pin			

## Suggested Loads

### Lyman Zouave .58 Musket — Suggested Loads (Alcan 4 — Wing Musket Cap)



MINIE  
575213  
505 Grs.

60 grs. FFG Black Powder (Vel. 1005 F.P.S.)  
Bullets are not patched, but must be lubricated.  
Use Lyman Bullet Lubricant or similar substance.



.562  
ROUND  
BALL

65 grs. FFG Black Powder (Vel. 1215 F.P.S.)  
Use .013 lubricated cloth patch.

# Lyman



1858  
ZOUAVE



Since  
1878

LYMAN PRODUCTS FOR SHOOTERS  
MIDDLEFIELD, CONN. 06455

A PRODUCT OF THE LEISURE GROUP



## Instructions

The Lyman Zouave Rifle is designed for use only with black powder. The rifle will fire two types of bullets: the Minie Ball and Round Ball. The design of the rifle will lend itself to better results with the Lyman Minie but a patched round ball may also be used with quite good results.

### Loading:

1. Dry the bore and chamber area with a clean patch.
2. Snap a cap or two to further dry the nipple channel and chamber area. Check for obstructing fragments, grease etc.
3. Set the butt on the ground with the piece angled so the muzzle is well away from your body.
4. Measure and pour the powder down the barrel.
5. Push the lubricated Minie ball skirt-down into the bore.
6. Place the recessed ramrod head over the Minie and ram it smoothly home. Again, strive for a smooth motion that leaves the Minie ball firmly seated atop the powder without air space or undue compression.
7. Bring the hammer to full-cock and press a cap firmly over the nipple. You are ready to fire.
8. After firing leave the hammer down over the exploded cap as you reload. This smothers any sparks left behind by your preceeding shot. Remember — avoid having your hands or face directly over the bore during the loading operation. After the gun is loaded follow the safety rules used for modern firearms.

## Instructions, cont.

### Cleaning:

You must clean this rifle after each shooting session to prevent rust and corrosion from damaging the metal parts. The Zouave Rifle may be disassembled for cleaning by removing the tang screw and sliding the barrel bands off after depressing the band springs. The lock may be removed by unscrewing the two lock plate screws. Of course, the rifle can be cleaned without any disassembly but care should be taken to prevent water and excessive solvents from entering the stock or lock assembly. Here are the two cleaning systems:

**Hot Soapy Water** — the traditional way to clean a muzzle-loader.

1. Scrub the bore with a strong solution of hot soapy water. Wipe all powder fouling from other metal parts.
2. Flush the barrel with the hottest clean water available. This not only removes the soap but also heats the steel and helps in the drying process.
3. Dry all parts.
4. Apply a good coat of oil or moisture-displacing lubricant on all metal parts.
5. Inspect for the next few days just to be safe.

**Modern Solvents** — Just as effective as soapy water if properly done. Solvents designed specifically for black powder guns are now on the market and the old standbys may be used as well.

1. Scrub the bore with a brass brush and lots of patches. Wipe down all metal parts.
2. Using plenty of clean patches, wipe the bore dry. Dry all metal parts.
3. Apply oil to all metal parts.
4. Inspect for the next few days just to be safe.

## Factory Service & Repairs

For factory service or repairs, please forward your rifle to the Lyman Service Dept., Box 147, Middlefield, Conn. 06455. Attach a complete letter of information to the outside of the package. Please package securely when shipping to Lyman. Use sufficient cushioning material to prevent movement of the rifle inside the package during shipment.

For minor repairs, check with gunsmiths in your area.

# ZOUAVE RIFLE CAL. 58 - ASSEMBLING INSTRUCTIONS

This Kit is supplied with some groups of parts assembled

First read instructions thoroughly, all the way through, understand them.

Now, check that all parts shown in the diagram are present and that you have sufficient tools to assemble the rifle. This would include: Sufficient screw drivers of proper size to mount all the screws. Flat and triangular files, and some small Swiss files necessary to fit and finish the metal parts. Also needed are fine grades of emery paper and crocus cloth and a wood mallet. In addition, it is helpful to have some solvent to clean the parts after they have been filed and polished to remove grit and metal particles.

Also needed, if you wish to blue finish your steel parts, is a Kit for gun blueing, making sure to prepare all steel surfaces very, very smooth with the use of Swiss files, emery paper and crocus cloth. Follow carefully the instructions generally supplied with your blueing materials. To finish the wood stock, you shall need a file and coarse grit paper, finishing paper or steel wool, wood filler and a stock finishing Kit. The machining of our stock is so precise that all the metallic parts interchange with it and no inletting work is required. For the preparation and finishing of wood stock follow the instructions included with your stock-finishing Kit.

To start assembling your gun procede as follows:

## 1. STOCK ASSEMBLING

Screw butt plate 34 on stock using the two screws 35.

Screw patch box 36 using the three screws 37.

With pin 21 mount ramrod spring 22, and with screw 12 mount forend cap 13.

## 2. TRIGGER GUARD ASSEMBLING

With screw 33 assemble trigger 26 on trigger plate 30, and with swivel pin 28 assemble swivel 27 on trigger guard 29. Then assemble these two groups together using two nuts 32. With screw 31 this assembly can now be mounted on the stock.

## 3. BARREL ASSEMBLING

Assemble rear sight group 42-44-45-46 using screw 43.

With tang screw 38 assemble barrel to the stock.

Mount band springs 14 and 18 on stock.

Assemble front swivel 17 on front band 15 with pin 16.

Then, insert rear band 19 and front band assembly on barrel.

## 4. LOCK ASSEMBLING

The lock is supplied already assembled and finished, including hardening of the action. The assembled lock can, at this point, be mounted on the stock using the two bushings 25 and the two screws 24.

## 5. RAMROD AND NIPPLES

Insert ramrod 47 and screw-in nipple 39 on drum.

Keep one spare nipple 39 screwed-in inside patch box.

## 6. FINISHING

Now that you have learned to assemble your Kit, we suggest you disassemble it, proceeding in the reverse sequence for finishing your Kit.

Start deburring and polishing to a very smooth finish all the brass parts that fit into the stock, see operation 1. STOCK ASSEMBLING.

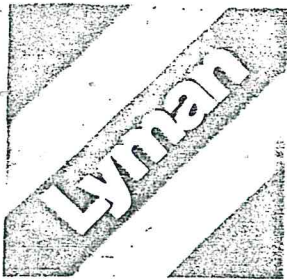
Then continue with deburring and polishing very smoothly one by one all the other metal parts of operation 2. TRIGGER GUARD ASSEMBLING and 3. BARREL ASSEMBLING.

If your wood stock is in a rough condition, file it down and sand it flush with the metal parts.

For blueing and wood finishing, follow the instructions contained on a blueing and stock finishing Kit which is needed to finish your gun.

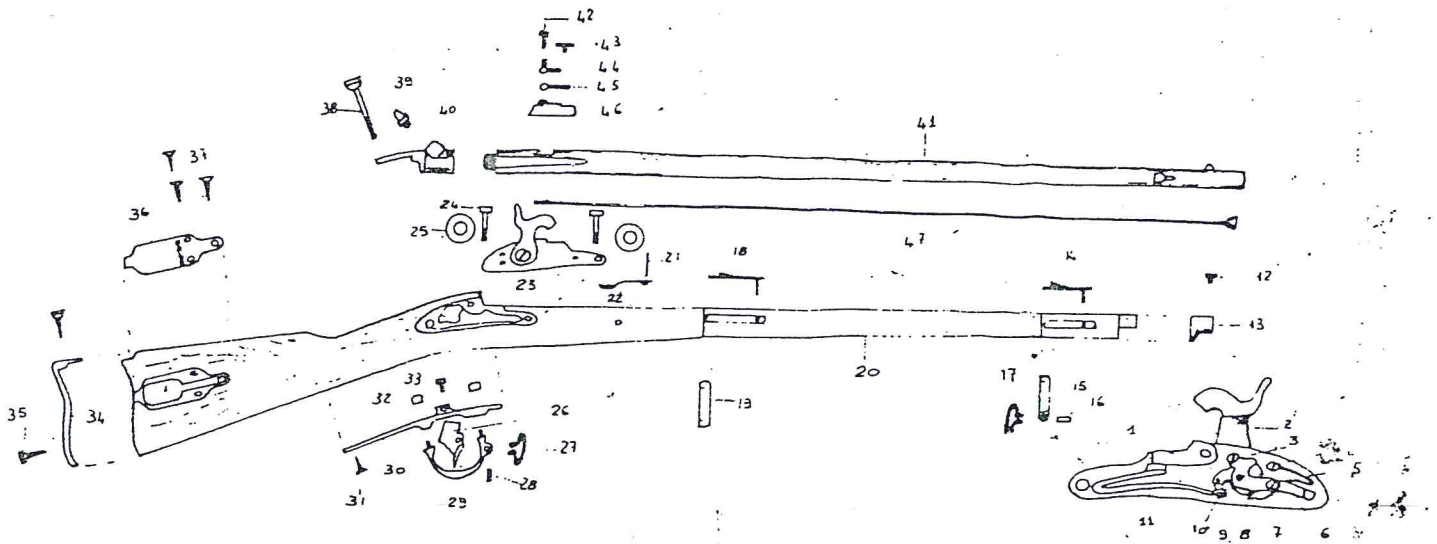
## 7. PROOF TESTING

Although the barrel of this Zouave Kit has already been proof tested, the rifle you have put together should not under any circumstances be fired unless it is proofed by a competent gunsmith and the function of the parts checked by him. In general, it is the custom to proof guns in the white, before finish is applied. When the gun has been proofed by overloading firing, it should be meticulously cleaned and the parts gone over again to remove burrs and scratches. On the wood stock you may then apply the stock finishing Kit and the steel parts blueed.



# LYMAN PRODUCTS FOR SHOOTERS

a division of the Leisure Group, Inc.  
Route 147, Middlefield, Conn. 06455, (203) 349-3421



## ZOUAVE RIFLE - PARTS LIST

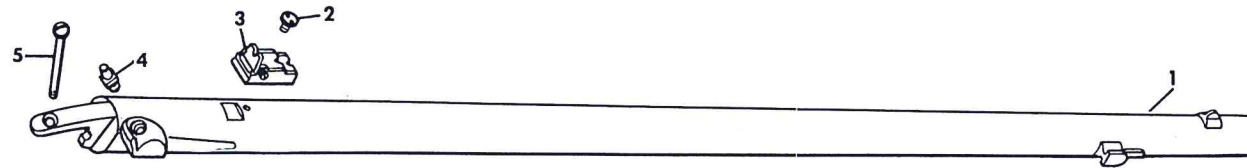
USE BLACK POWDER ONLY

- |                      |                           |                            |
|----------------------|---------------------------|----------------------------|
| 1. LOCK PLATE        | 17. BELT SWIVEL, FRONT    | 33. TRIGGER SCREW          |
| 2. HAMMER            | 18. BAND SPRING           | 34. BUTT PLATE             |
| 3. BRIDLE SCREW      | 19. REAR BAND             | 35. BUTT PLATE SCREW (2)   |
| 4. SEAR SPRING SCREW | 20. STOCK                 | 36. PATCH BOX ASSEMBLY     |
| 5. SEAR SPRING       | 21. RAMROD SPRING PIN     | 37. PATCH BOX SCREW (3)    |
| 6. SEAR              | 22. RAMROD SPRING         | 38. TANG SCREW             |
| 7. SEAR SCREW        | 23. LOCK ASSEMBLY         | 39. NIPPLE                 |
| 8. BRIDLE            | 24. LOCK SCREW (2)        | 40. BREECH PLUG            |
| 9. TUMBLER           | 25. LOCK SCREW WASHER (2) | 41. BARREL                 |
| 10. MAIN SPRING LINK | 26. TRIGGER               | 42. REAR SIGHT LEAF SCREW  |
| 11. MAIN SPRING      | 27. BELT SWIVEL, REAR     | 43. REAR SIGHT BASE SCREW  |
| 12. FOREND CAP SCREW | 28. BELT SWIVEL PIN       | 44. REAR SIGHT FIRST LEAF  |
| 13. FOREND CAP       | 29. TRIGGER GUARD         | 45. REAR SIGHT SECOND LEAF |
| 14. BAND SPRING      | 30. TRIGGER PLATE         | 46. REAR SIGHT BASE        |
| 15. FRONT BAND       | 31. TRIGGER PLATE SCREW   | 47. RAMROD                 |
| 16. BAND PIN         | 32. TRIGGER GUARD NUT (2) |                            |



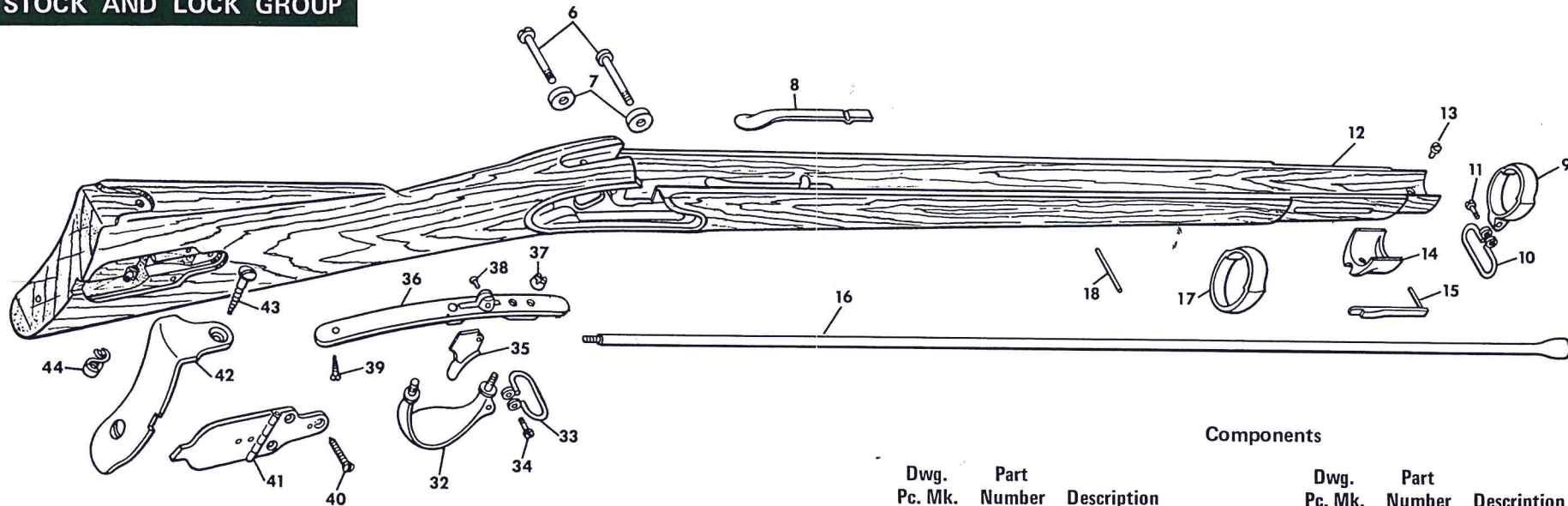
# Lyman ZOUAVE .58

## BARREL AND SIGHT GROUP



Dwg. Pc. Mk.	Part Number	Description
1	6050120	Barrel
2	6050121	Rear Sight Retainer Screw
3	6050122	Rear Sight Assembly
4	6050123	Nipple
5	6050124	Barrel Screw
6	6050125	Lock Plate Screws
7	6050126	Stock Bushings
8	6050127	Ram Rod Spoon
9	6050128	Front Band
10	6050129	Front Swivel
11	6050130	Swivel Screw
12	6050131	Complete Stock
13	6050132	Fore End Tip Screw
14	6050133	Fore End Tip
15	6050134	Band Spring
16	6050135	Ram Rod
17	6050136	Rear Band
18	6050137	Spoon Retaining Pin

## STOCK AND LOCK GROUP



Dwg. Pc. Mk.	Part Number	Description	Dwg. Pc. Mk.	Part Number	Description
32	6050151	Trigger Guard	39	6050158	Trigger Plate Screw
33	6050152	Rear Swivel	40	6050159	Patch Box Screw
34	6050153	Swivel Screw	41	6050160	Patch Box
35	6050154	Trigger	42	6050161	Butt Plate
36	6050155	Trigger Plate	43	6050162	Butt Plate Screw
37	6050156	Trigger Guard Nut	44	6050163	Worm
38	6050157	Trigger Screw			

## Parts List and Instructions