

# E-ZEE Prime™

## Hand Priming Tool Instructions



**Lyman®**

# **WARNING!** Read All Warnings Before Using This Tool!

**WEAR SAFETY GLASSES AT ALL TIMES WHEN HANDLING OR PRIMING CASES!**

Keep the priming tray pointed away from yourself and others when in use. Primers can explode if subjected to excessive force, shock, heat or crushing! NEVER force a primer with this hand tool. If any unusual force is required when seating a primer, STOP IMMEDIATELY. Remove primers from the tray and determine the cause of the increased force. Causes could include a tipped primer, a military case with a crimp still in place, the case may already have a primer in place, or the primers could be the wrong size for the shell.

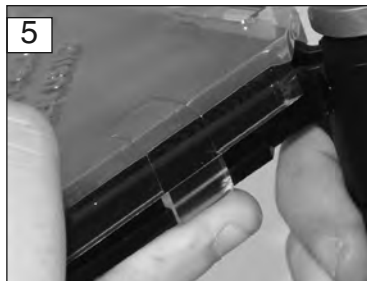
- Wear safety glasses at all times when handling and priming cases.
- Never attempt to seat or reseal a primer in a loaded round.
- Handle primers with care! Never force or excessively shake primers.
- Keep the number of primers in the tray to a minimum. Never add more than 100 primers to the tray.
- The primer tool must be held so that the priming tray is away from the user.
- Never smoke when handling primers or powder
- Only store primers in their original packaging. If primers are left in the tray, remove them and return them to the original packaging.
- Never allow children to handle this tool or other reloading equipment.
- Keep the cover on the primer tray when in use.
- Use only new primers in good condition. Never use primer of unknown type, condition or age.
- Primer pockets should be clean and military cases must have the primer crimp removed before seating primers.
- Keep the priming tool and case being primed pointed in a safe direction.

## Directions

- 1) **PUT ON SAFETY GLASSES.**
- 2) Select the proper size primer tray assembly (F) to match the size of the primers being used. The trays are marked “Large” or “Small” on the bottom side.
- 3) Remove the retaining collar (C) from the priming tool body (D) and slide the correct size primer tray assembly (F) into the slot in the top of the tool body.
- 4) Drop the proper size shell holder onto the alignment sleeve on the tray assembly (F) and re-install the retaining collar. (C)



- 5) Remove clear cover (A) from the primer tray by lifting out and up on the tab on the side of cover. Place the minimum number of primers needed (never more than 100) onto the tray.



- 6) Gently move the tray in a circular motion to upright the primers. The primers should have the open side pointed up. If a few primers are difficult to turn over, simply turn them over with a finger.



- 7) Replace the cover (A) onto the tray by starting with the corner farthest away from you and snapping the latch into place. There is a primer stop (B) on the top of the cover that should be slid forward to block the flow of primers into the tool body (D) whenever you are not actually priming cases.

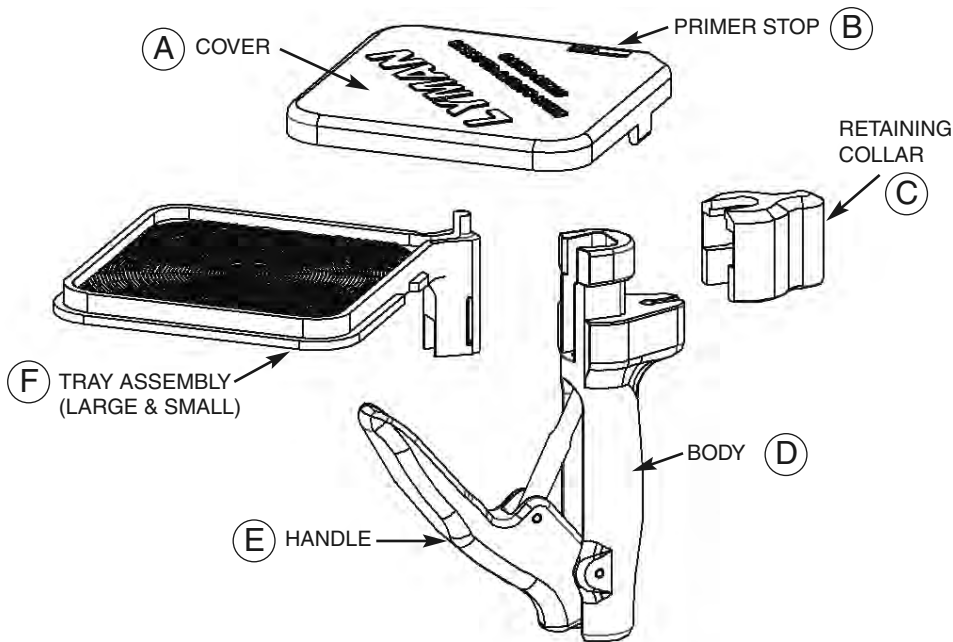


## CAUTION:

### Steps 8 - 9 could lead to explosion

- 8) Hold the priming tool so that the primer tray is tipped towards you slightly. This will allow a primer to slip onto the primer punch. Insert a case into the shellholder. Squeeze the handle and allow the tool to tip forward away from you as the primer is seated. This action happens naturally from the design of the handle. Keep the primer tray tipped away from you as primers are seated.
- 9) Seat the primer so that it is just slightly deeper than the face of the case head. Primers are designed to be seated .003" to .005" below flush. You will quickly be able to develop a "feel" for when the primer is at the correct depth. The primer punch will not bottom out when seating primers, so **DO NOT** continue to squeeze the handle once you feel the primer stop against the bottom of the pocket. If any unusual force or resistance is felt, **STOP**, remove primers from the tool, and determine the cause.
- 10) Remove the primed case from the shell holder and continue priming cases as described above. Return all unused primers to their original packaging when finished.





# Lyman®

475 Smith St., Middletown, CT 06457

1800-22LYMAN • 1-860-632-2020

[www.lymanproducts.com](http://www.lymanproducts.com)