

Lyman®

Borecam PRO Wireless Borescope



Operation Instructions

Lyman's Borecam Pro borescope takes barrel inspection to a whole new level! The wireless Borecam Pro produces its own WIFI signal which sends super clean and detailed images directly to your phone. No wires or monitors to get in the way during use. Carefully inspect your bores for wear, throat erosion, tool marks and other rifling damage, as well as copper or lead fouling. The Borecam Pro will fit 20 caliber and larger barrels and is now equipped with a longer 24" rod. In addition to taking photos, the Borecam Pro now takes sharp, clear videos. The Borecam Pro's easy-to-use app makes storing and retrieving photos and video simple. Apps are available for iOS and Android phones and tablets.



WARNINGS!

- Make absolutely sure firearms are unloaded and that their actions are open before using this Borescope!
- Always keep firearms pointed in a safe direction during handling.
- Keep any liquids away from the unit. Liquid increases the risk of electrical shock and damage to the unit. Do not immerse in liquids.

- The unit is not shock resistant. Avoid dropping from heights or any types of impacts.
- Do not use the unit in the presence of flammable substances or near electrical wiring.
- The Borescope is designed for the inspection of firearm bores and chambers. It should not be used for other industrial uses. Do not use for any medical inspections.
- Turn off when not in use.
- Only use the supplied power adapter to charge this unit.
- Properly dispose of batteries. Exposure to high temperatures can cause batteries to explode.

FEATURES

- Wireless WIFI operation
- 720P Resolution
- Clean, sharp image
- Fits 20 caliber and larger barrels
- 24" long rod
- Can take photos and video
- Easy to use apps for iOS and Android phones or tablets

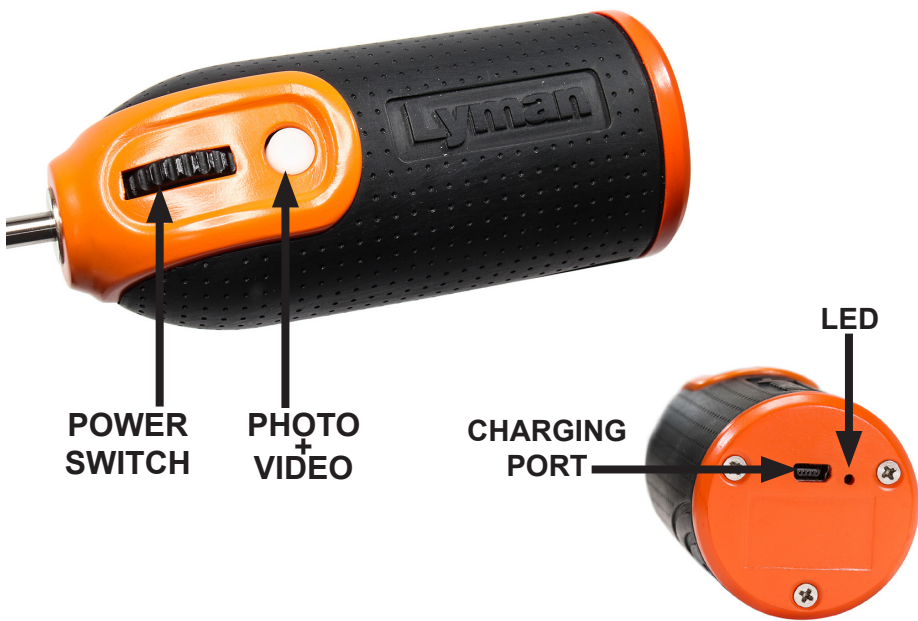
CONTENTS

The Borecam Pro should include the following items:

1. Borescope handle and wand
2. Charging Adapter
3. USB Cable
4. Cotton Swabs
5. Lens Cleaning Solution
6. Instruction Manual

GETTING STARTED

The Borescope Pro should be fully charged before use. To charge the Borescope, connect the provided USB cable to the Charging Adapter, then connect the cable to the Borescope. Plug the charging adapter into a power outlet of the appropriate voltage. A red LED light on the back end of the Borescope will go on during charging and will go off when fully charged. When the Borescope is turned on and in use, the LED light will be green.



BASIC OPERATION

To turn on the Borescope Pro camera, roll the power switch on the top of the handle forward. The LED light will show green. The power switch also controls the intensity of the camera lights. Rolling the switch fully forward will give the greatest light level and it will be dimmed as it is rolled back the opposite direction. For most barrel inspections, the best image will be obtained as the brightest setting. If you see excessive glare, then dimming the light often helps.

The button on the handle can be used to either take pictures or video. A quick press of the button will take a picture. If the button is held down for one second, a video will start recording. Another one second press will end the recording.

This button will also blink when attempting to connect to your device. The button will turn to a steady light when connected.

APP Installation and Operation

To install the APP, open Google Play Store/Apple Store and search for Lyman Borecam. Install the APP on your phone or tablet. A new icon will then be displayed for the Borecam APP.

The App can also be found using this QR code. The code will work for both iOS and Android phones.

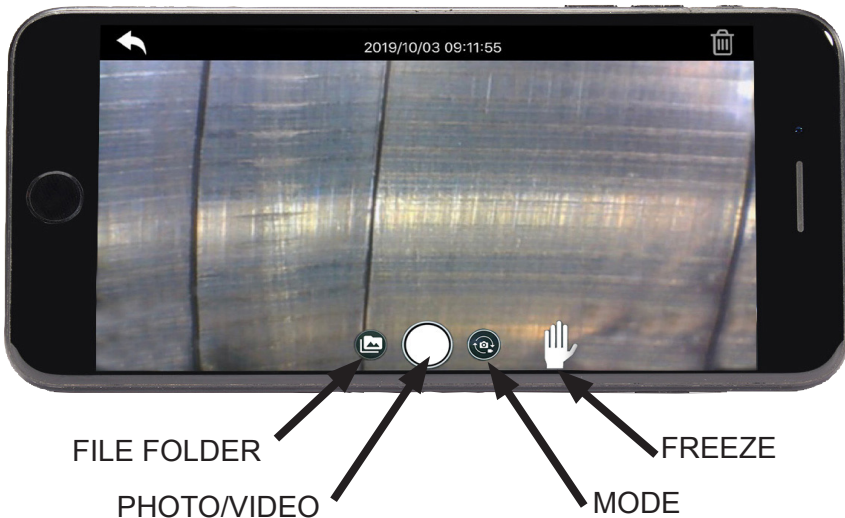


Connect to WIFI

Turn on the Borecam and wait for about 7 seconds, then it will generate a WIFI signal called Lyman Borecam-XXXX (note: xxxx references a code for each individual Borecam). Connect to the WIFI signal from your device's settings, then type in the default password: 12345678.

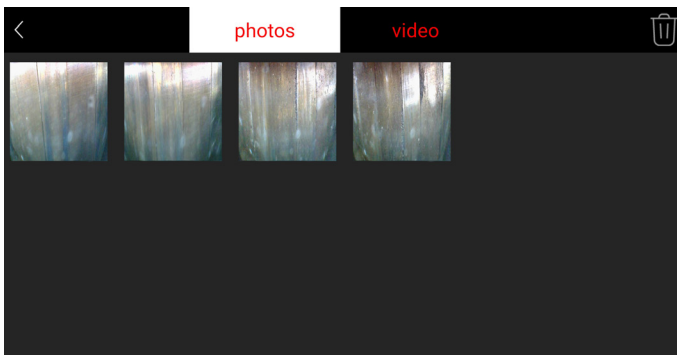
Click on the Borecam icon to open the Borecam APP. A live image will be displayed if the connection is successful. The Borecam wand can now be inserted into the bore or chamber of your firearm to inspect their condition.

PHOTOS AND VIDEOS



Taking a photo: simply press the Photo/Video button at the bottom of the APP, or quickly press the button on the handle of the Borecam. You can also “freeze” an image for review by pressing the Hand button on the APP. The APP will then allow you select Save or Cancel. Save will storage the image in your File Folder, Cancel will return you to the live image.

To take a video: first press the Mode button on the APP to switch to video function and then press the Photo/Video button. This button will switch to red showing that a video is being recorded. Press it again to stop recording. A video could also be recorded by pressing the button on the Borecam handle for about 1 second. Pressing it again for a second will end the recording.



Review photos or videos: press the File Folder button on the APP to get playback mode. Select either Photos or Video at the top of the APP, then select the image/video to review by tapping on the image. You can also Delete the image/video by selecting it and then tapping on the trash can icon.

Press the back arrow at the top of the APP to return to live image display.

Troubleshooting

Problem	Possible Cause	Likely Solution
Borecam will not start	Charge is too low	Plug Borecam into charger
No image	WIFI connection failed	Check device's WIFI connection and reconnect to Borecam
Image too dark or too light	Camera LEDs need to be adjusted	Use the Power switch to adjust the brightness level
Too much glare	Camera LEDs need to be adjusted	Use the Power switch to adjust the brightness level
Blurred Image	Dirty lens glass and image reflection mirror	Clean glass and mirror

SPECIFICATIONS

Resolution – 720P

Wand Diameter - .19" (4.8mm)

Wand Length – 24" (61cm)

Overall Length – 28" (71cm)

Battery – 3.7V-143mAh

Working Time – 3 hours

Charging Time – 4 hours

Operating Systems – Android 7.0 or above, IOS version 9.0 or above

WARRANTY/REPAIR POLICY

Your Lyman product has been produced under rigid standards of manufacture and inspection. However, if your Lyman product is found to be defective in material or workmanship within one year of delivery to the first retail purchaser, we will repair or replace it without charge.

If you require service under this warranty, please return the complete item along with a letter of explanation, including your complete name and address, freight prepaid to the factory at the address listed below. Your Lyman product will be repaired or replaced and returned to you within 30 days of our receipt. In making any return of a Lyman product to the factory, please be sure it is packaged with proper care to protect it from damage in transit.

We are sorry, but our warranty cannot apply to a defect which results from misuse, abuse, neglect, accident or improper care, or if your Lyman product has been altered or repaired by anyone other than factory personnel.

If the item is out of warranty and is in need of repairs, the Lyman product should also be returned to the same address listed below. Appropriate charges will apply for parts and labor. Estimates are available only when the item has been thoroughly inspected by our repair personnel.

Lyman Products Corporation
475 Smith Street, Middletown, CT 06457
Attn: Service Department

Lyman®
475 Smith Street
Middletown, CT 06457

Customer Service: 1-800-22 LYMAN
or 1-860-632-2020
www.lymanproducts.com